

**RZR PRO R / PRO S / TURBO R
/ PRO XP SPARE TIRE CARRIER GEN 2**

IMPORTANT: Thank you for purchasing this Cagewrx product. Please read through this entire document before proceeding with installation. If you are not confident in your mechanical skills, please seek the help of a professional to perform the installation. Check your packages immediately upon arrival to ensure that everything listed is included, and to check for damage during shipping. If anything is missing or damaged, or if you need technical assistance with any aspect of this installation, call Cagewrx at (951) 223-9118 as soon as possible. This document last updated April, 2025.

APPLICATIONS

These Installation Instructions apply to the following Cagewrx products:



PROR-TC-V2 RZR Pro R / Pro S / Turbo R / Pro XP Spare Tire Carrier Gen 2

TOOLS NEEDED

- 5/32" Hex Key
- 1/4" Hex Key
- 9/16" Wrench
- 3/4" Wrench
- 3/4" Socket
- Torx T40
- 12mm Wrench
- 14mm Wrench
- 16mm Wrench
- 19mm Wrench
- 6mm Hex Key
- 13mm Socket
- 1/4" Drill Bit
- Multi-Tool
- Anti-Seize

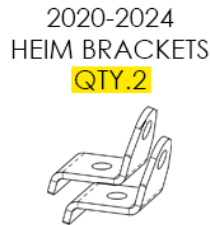
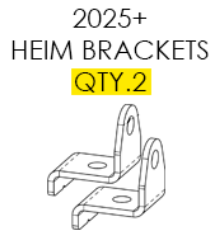
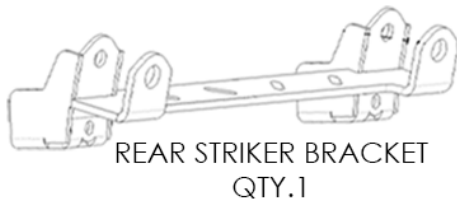
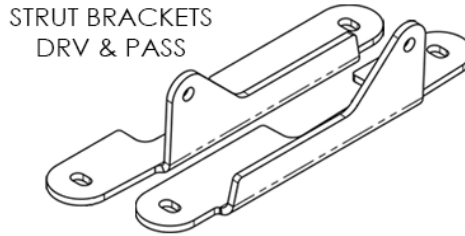
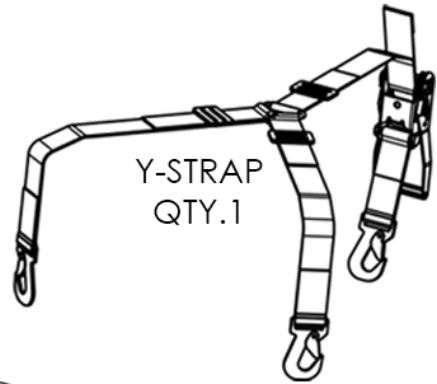
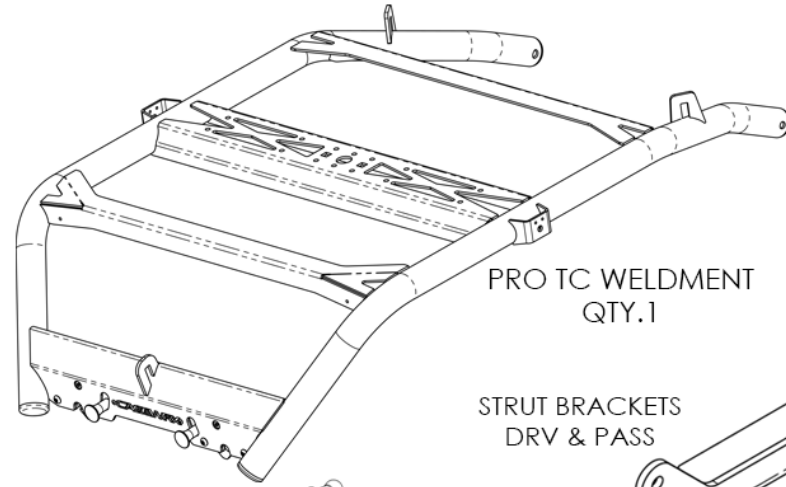
PARTS LIST

Please check your packages immediately upon arrival to ensure that everything listed is included, and to check for damage during shipping. If anything is missing or damaged, call Cagewrx at (951) 223-9118 .

1. Tire Carrier Main Frame
2. (2) 15" 100lb Struts with strut balls and nuts
3. Cagewrx Y-Strap
4. Rear Striker Bracket
5. (2) 20-24 Heim Brackets / (2) 25+ Heim Brackets
6. (2) Strut Brackets - DRV & PASS
7. (2) Pro R Bed Bracket Plates
8. (2) 1/2-20 x 2" Hex Head Cap Screws
9. (2) 3/4" OD x 3/8" Long Aluminum Spacers
10. (2) 1/2" Flat Washers
11. (2) 1/2-20 Nyloc Nuts
12. (2) 1/2" Rod Ends
13. (2) 1/2-20 Thin Nuts
14. (2) 3/8-16 x 1-1/2" Shoulder Bolts
15. (2) 3/8" Nyloc Nuts
16. (8) M6 x 20 Button Head Cap Screws
17. (10) #12 Flat Washers
18. (2) M6 Nyloc Nuts
19. (4) M8 x 55 Hex Cap Screws
20. (4) 5/16" Flat Washers
21. (4) Machined Bushings
22. (4) M8 x 1.25mm Knurled Nuts
23. (4) M8 Nyloc Nuts
24. (4) M8 x 1.25mm Hex Jam Nuts
25. (4) 5/16" Oversized Washers

SPINNER OPTION

1. Threaded Spinner
2. Wheel Mounting Plate
3. Spinner Nut
4. (4) M12-1.75 x 30mm Socket Head Cap Screws
5. (4) M12-1.75 Lug Nuts
6. (2) 3/8"-16 Carriage Bolts
7. (2) 3/8"-16 Nyloc Nuts



HARDWARE PACK

SECTION 1



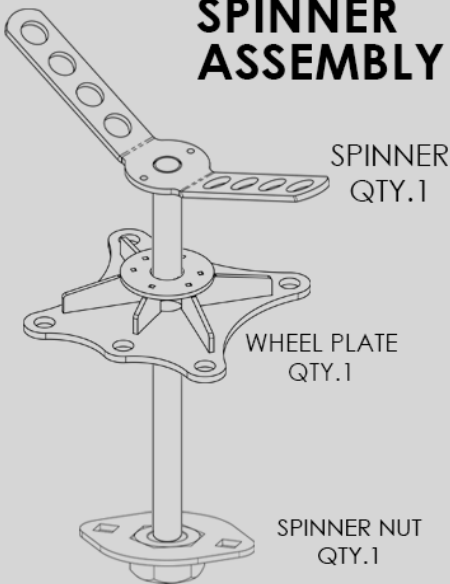
SECTION 2



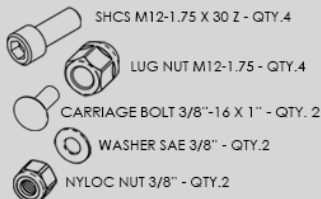
SECTION 3



SPINNER ASSEMBLY

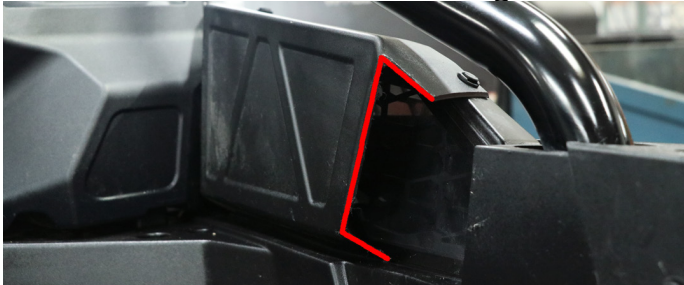


HW PACK



INSTALLATION PROCEDURE

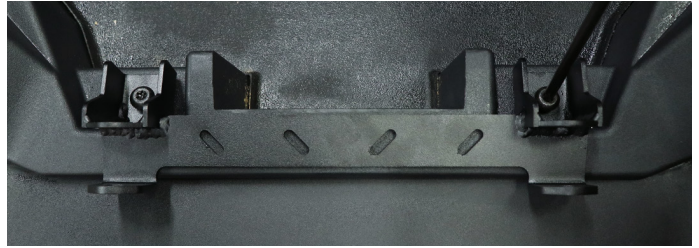
1. Begin by **Trimming** or removing the factory air ducts on both sides of the bed of the RZR. We trimmed ours on the red line, but you can trim more to make it cleaner looking as desired.



2. Remove the (2) factory Torx T40 bolts at the rear of the bed that secure the bed to the RZR.



3. Install the **Rear Striker Bracket** and secure with the factory Torx T40 bolts that were just removed.



4. Using the bracket as a **template**, drill holes through the plastic just beneath the bracket using a 1/4" drill bit on both the left and right side of the bed.



5. Remove the bracket from the RZR and set aside to be installed in a later step.

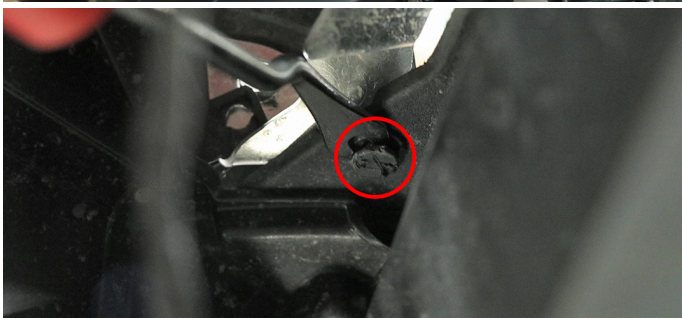
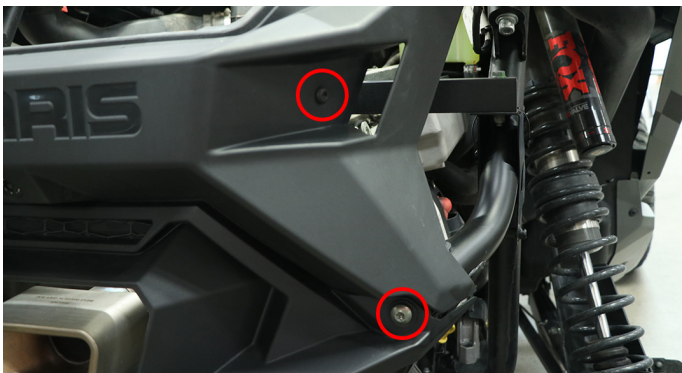
6. Remove the **Bed** from the RZR by removing the (2) factory Torx bolts at the top of the bed and then lifting it out.



NEXT STEPS FOR PRO R ONLY

SKIP TO PAGE 6 IF INSTALLING ON A PRO XP OR A TURBO R

6. Remove the Rear Fascia by removing the outlined Torx T40 bolts on each side as well as the plastic clip from the underside of the fascia.



7. Pull the Rear Fascia back enough to get to the subframe underneath. You do not need to completely remove the Rear Fascia.

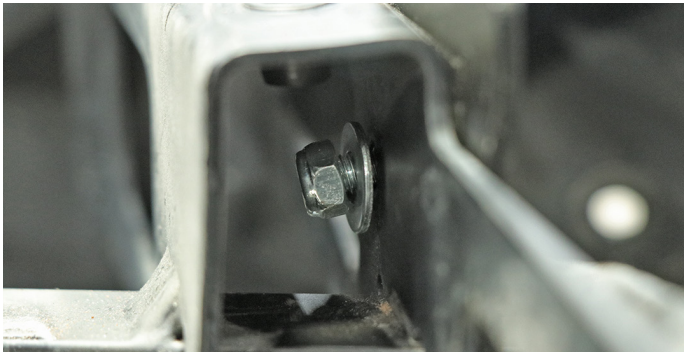


8. Install the supplied ProR Bed Bracket Plates as pictured below. There is a hole in the factory subframe that you will use to mount the ProR Bed Bracket Plates with the supplied M6 x 20 Button Head Cap Screws, #12 washers, and M6 Nyloc Nuts. Make sure to install it so that the Press Nut at the top of the plate is in line with the Press Nut installed on the factory subframe. Tighten these down using a 4mm Hex Key and a 10mm Wrench.



NEXT STEPS FOR PRO R ONLY

SKIP TO PAGE 6 IF INSTALLING ON A PRO S, OR A TURBO R



9. Reinstall the Rear Fascia making sure to tighten down all Torx bolts as well as put the plastic clips back in on each side.



10. Install the bed back on your RZR and tighten down the (4) factory Torx T40 bolts that hold it in place.



11. Install (2) of the supplied M6 Button Head Cap Screws with #12 washers through the Rear Striker Plate and into the Bed Bracket Plates that you just installed in the previous step. Apply a small amount of blue loctite to these bolts. You may need to slide the bed left to right a little to get the bolt and the Press Nut to align and thread in. Tighten down completely using a 4mm Hex Key and reinstall the (4) Torx T40 bolts to secure the bed.



CONTINUE TO PAGE 7 FOR PRO R INSTALL

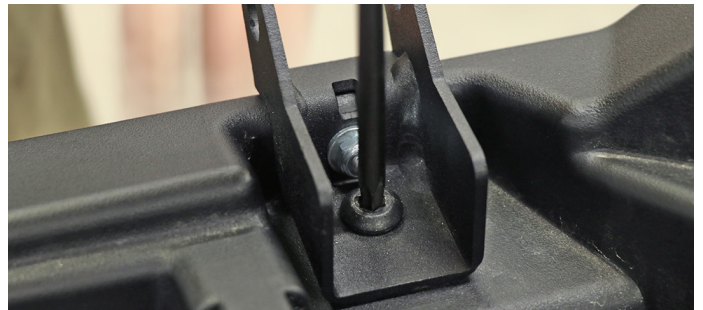
NEXT STEPS FOR PRO S / TURBO R / PRO XP ONLY

PROCEED TO PAGE 7 TO CONTINUE PRO R INSTALLATION

6. Install (2) of the supplied M6 Button Head Cap Screws with #12 washers and M6 Nyloc Nuts through the very rear of the bed and into the supplied Rear Striker Bracket (PHOTO OUTDATED. THIS IS NOW ONE BRACKET ALL THE WAY ACROSS). Tighten these bolts using a 4mm Hex Key and a 10mm Wrench.



7. Install the bed back on your RZR and tighten down the (4) factory Torx T40 bolts that hold it in place.



**CONTINUE TO PAGE 7
FOR PRO S / TURBO R / PRO XP INSTALL**

12. Install the (2) supplied Heim Brackets as pictured below by removing the inner harness bolts using a 19mm and 16mm Wrench. **USE CORRECT BRACKETS!** We supply brackets for both the 2020-2024 models as well as the 2025+ models. Refer to parts drawing on page 2! Seat Belt Harnesses vary and some get installed on top of our bracket and some get installed under our bracket. Some factory harnesses have a small hook on the back that needs to be ground off in order for them to be reinstalled.



13. **THIS STEP FOR 2025+ 4 SEAT ONLY!**
Remove the factory speakers to access the Rear Seat Bracket bolts. Be sure to unclip the harness.



14. **THIS STEP FOR 2025+ 4 SEAT ONLY!**
Remove the factory Torx bolts that hold the inner side of the seat bracket on as well as the Torx bolt that holds the speaker bracket on.



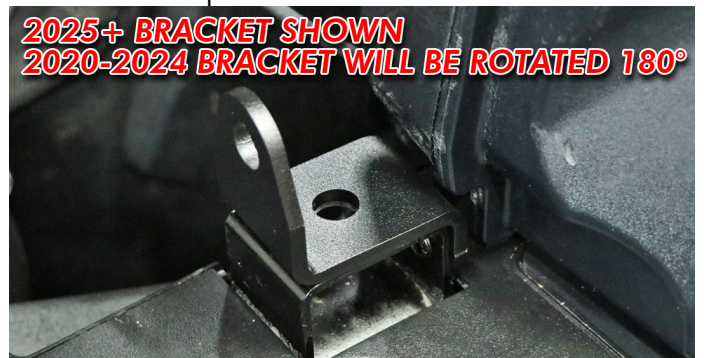
15. **THIS STEP FOR 2025+ 4 SEAT ONLY!**
Slide the provided Heim Bracket between the Rear Seat Bracket and the Seat Belt bracket. You will need to apply some force to push the seat bracket over to allow our heim bracket to fit.



16. **THIS STEP FOR 2025+ 4 SEAT ONLY!**
Install the supplied M6 x 20mm Button Head Cap Screws with #12 washers to secure the rear seat bracket and our Heim Bracket to the seat belt bracket. Be sure to secure the speaker bracket back down with the factory Torx bolt as well.



17. If you do not have a 2025+ 4 Seater, set the Heim Brackets in place according to the year of your RZR (see photo). Install your seat belt shoulder straps and reinstall the factory bolt to secure it all in place.



WITHOUT LOCK & RIDE BOXES

18. Set the Strut Brackets in place. Make sure they are sitting against the side wall of the RZR. Install the supplied M8 x 55 Hex Head Cap Screws with 5/16" Flat Washers on the top of the bracket. Slide the Machined bushing up into the hole in the plastic and proceed to install an M8 Nyloc Nut underneath. Slide the edge of the brackets all the way against the outside plastic and tighten down using a 6mm Hex Key and a 13mm Socket.



WITH LOCK & RIDE BOXES

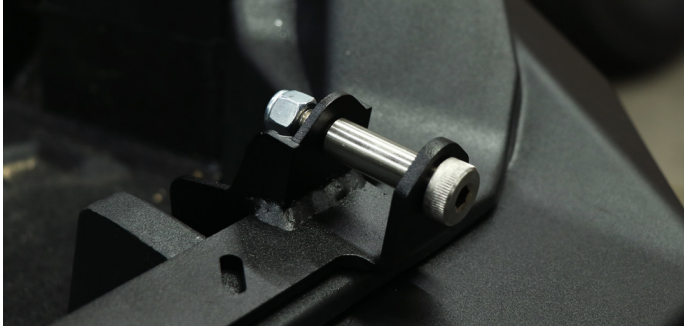
18. Set the Strut Brackets in place. Make sure they are sitting against the side wall of the RZR. Install the supplied M8 x 55 Hex Head Cap Screws and a Machined Bushing from under the bed of the RZR. On the top side, install a 5/16" Flat Washer and the supplied M8 x 1.25mm Hex Jam Nut (It is recommended to use loctite on the threads where this nut will tighten). Tighten down using a 6mm Hex Key and a 13mm Socket.



19. Install your Lock & Ride Box followed by the supplied 5/16" Oversized Washer and the supplied M8 x 1.25mm Knurled Nut (you can use the supplied M8 Nyloc Nut if you prefer a more secure solution). The very front hole on the front cargo box will still use the factory Lock & Ride Plungers.



20. Install the (2) supplied Shoulder Bolts and 3/8-16 Nyloc Nuts into the Rear Striker Bracket and tighten down using a 1/4" Hex Key and a 9/16" Wrench.



21. Install the supplied Strut Balls and nuts on the Tire Carrier Main Frame and tighten down using a 12mm and 14mm Wrench.



22. Install the supplied 1/2" Rod Ends and 1/2-20 Thin nuts to the Tire Carrier Frame. Be sure to use a small amount of Anti-Seize lube on the threads before screwing them in. Leave around 3 threads showing as a starting point for now.



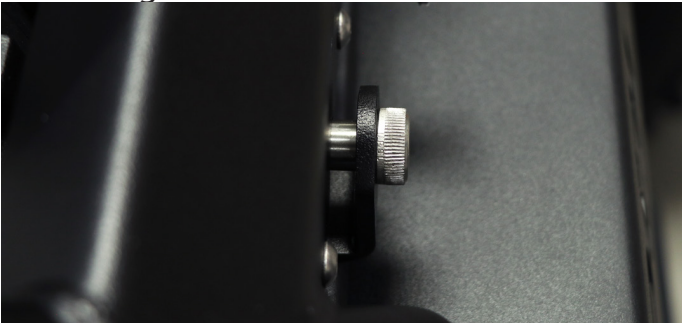
23. Install the Struts to the strut balls on the Strut Brackets with the body (bigger tube) facing upwards. Simply press the ends of the gas strut into the ball and you will hear it click and lock. Lay them down towards the back of the RZR for now as we install the main frame.



24. Latch the Tire Carrier to the shoulder bolts on the Rear Striker Bracket and slowly lower the heims down to the Heim Brackets.



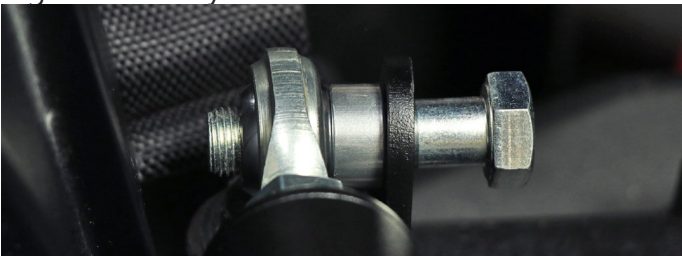
25. Center the latches on the pins (front to rear) to ensure the best functionality when opening and closing.



26. Line up the Heims at the front of the carrier to the mounting hole in the Heim Brackets. You can thread them in or out until you get the holes to line up. Once they are in line, double check to make sure the latch is still centered on the pins in the rear.



27. Secure the Heims to the Heim Brackets using the supplied (2) 1/2-20 Hex Head Cap Screws, 3/4" OD x 3/8" long spacers, 1/2" Washers (only on the nut side), and 1/2-20 Nyloc Nuts. Tighten down using a 3/4" Wrench and Socket once aligned correctly in the front and rear of the carrier.



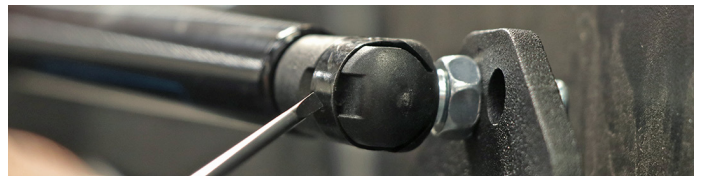
28. Tighten the Jam Nuts using a 3/4" Wrench once the heims are fully tightened down.



29. Secure Struts to the Frame of the Tire Carrier the same way you installed them to the Strut Brackets in the previous step.



**To remove the struts, use a small flat screwdriver and insert into the slot on the back of the strut ends. Pry the clip out a bit and pull on the strut at the same time to release it.*



30. Installation Complete! See the next page for installation of your spare tire and our provided Y-Strap that holds the tire in place.



31. Install the provided Y-Strap to the (2) front hoops that are welded on the Tire Carrier Frame tubing. Once they are both attached, move the entire strap towards the front of the carrier to make room for your Spare Tire to sit in place.



32. Install your Spare Tire by setting it on the main frame and centering it as best as possible. You can adjust the position once the Y-Strap is in place.



33. Secure the back of the Y-Strap to the hoop welded to the rear of our Spare Tire Carrier and adjust the tire as needed to ensure it is centered. Make any adjustments to the strap in the front and rear to ensure a tight fit. Your strap should be adjusted to look like the strap in the photo below. Once adjusted correctly, ratchet the strap at the rear to secure the tire in place.



You're all done! Pull up on the (2) Machined knobs on the sides of our Logo in the rear and watch your spare tire raise like magic!



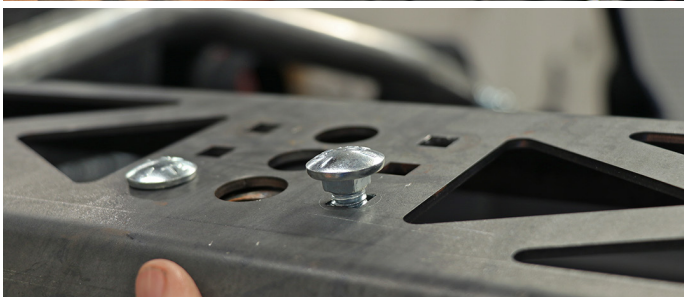
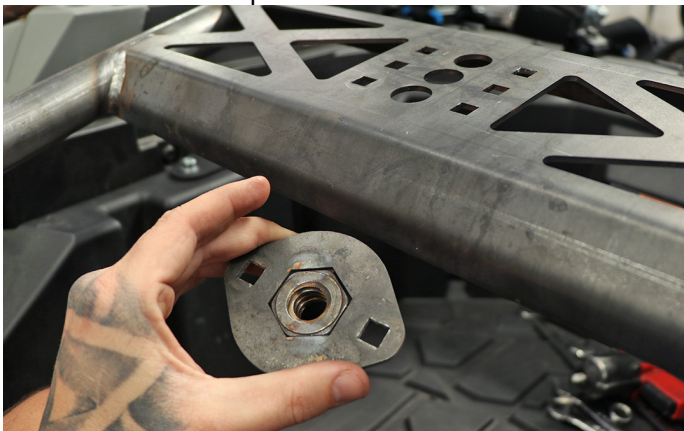
Let us know what you think! As a small business, we strive on reviews from our customers. If you have a chance, please search Cagewrx on Google and leave us a Google review letting us know how you liked this product! We greatly appreciate your business.

THREADED SPINNER INSTALLATION ON NEXT PAGE!

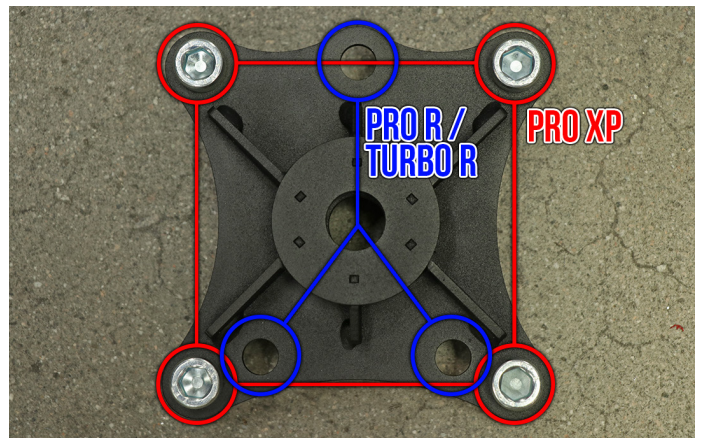
THREADED SPINNER INSTALLATION

1. Install the supplied Spinner Slider Bracket on the bottom side of the Tire Carrier Frame as pictured. Securing using the supplied 3/8-16 Carriage Bolts, 3/8" Flat Washers, and 3/8-16 Nyloc Nuts.

Notice there are 3 locations that the Locator Bracket can be installed. This is to allow a larger tire when mounted towards the very rear or a smaller tire towards the front. Install in the hole that best works for you. A 35" tire will fit on any one of these setups.



2. Install the M12 Socket Head Cap Screws and Lug Nuts to the Wheel Mounting Plate. You will need to install these according to your setup. If you have a 5 lug wheel (Pro R or Turbo R), you will use the 3 lug setup. If you have a Pro XP, you will use the 4 lug setup. See below.



THREADED SPINNER INSTALLATION CONTINUED

3. Install your Spare Tire by first placing the Tire on the Carrier frame with the face of the wheel upward. You will then place the Wheel Mounting Plate on top of the wheel with the lug nuts in the holes of the wheel. The Threaded Spinner will then go through the Wheel Mounting Plate and into the locator bracket that you installed on the bottom side of the Tire Carrier Frame. Move the wheel around until the threaded spinner is aligned and can thread in smoothly. Tighten down until the wheel is secure. DO NOT OVER TIGHTEN or you could cause the welds on the Spinner Nut to break over time.

