



CAN AM MAVERICK R SPARE TIRE CARRIER - SPINNER

IMPORTANT: Thank you for purchasing this Cagewrx product. Please read through this entire document before proceeding with installation. If you are not confident in your mechanical skills, please seek the help of a professional to perform the installation. Check your packages immediately upon arrival to ensure that everything listed is included, and to check for damage during shipping. If anything is missing or damaged, or if you need technical assistance with any aspect of this installation, call Cagewrx at (951) 223-9118 as soon as possible. This document last updated January 2026.

APPLICATIONS

These Installation Instructions apply to the following Cagewrx products:



MAVR-TC

Maverick R Spare Tire Carrier

TOOLS NEEDED

- Ratchet or Impact
- T20 Torx Wrench, T30 Torx Wrench
- 5/32" Hex Key, 7/32" Hex Key, 1/4" Hex Key
- 7/16" and 9/16" Socket and Box Wrench
- 3/4" Box Wrench
- 10mm Hex Key
- 12mm, 13mm, 14mm Socket and Box Wrenches
- 15mm, 19mm Box Wrenches
- 1/8" Drill Bit, 7/16" Drill Bit, 9/32" Drill Bit
- Anti-Seize
- Plastic Snips
- C-Clamp
- Plastic Clip Removal Tool

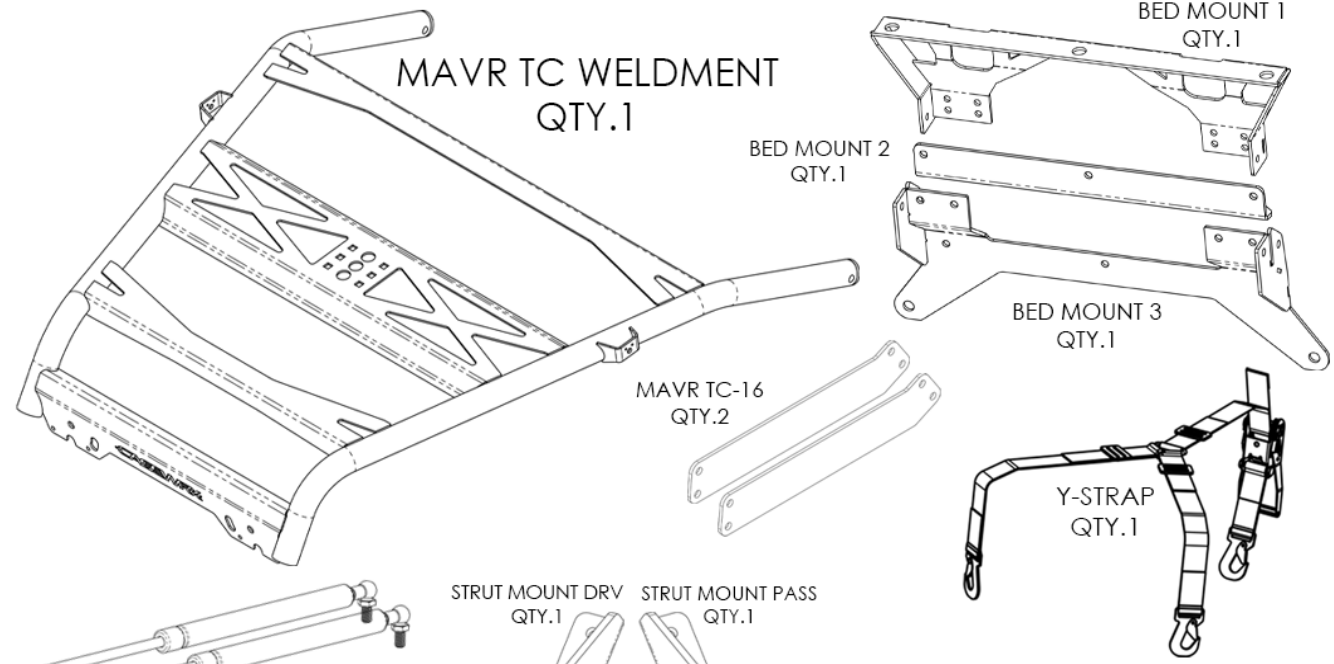
PARTS LIST

Please check your packages immediately upon arrival to ensure that everything listed is included, and to check for damage during shipping. If anything is missing or damaged, call Cagewrx at (951) 223-9118 .

1. MavR TC Weldment (Main Frame)
2. (2) 15" 100lb Struts with strut balls and nuts
3. Y-Strap
4. Bed Mount 1
5. Bed Mount 2
6. Bed Mount 3
7. (Striker Mount)
8. (2) Strut Mounts - DRV & PASS
9. (2) Strut Mount Braces - DRV & PASS
10. (2) Heim Mounts
11. (2) Strut Bracket Flat Braces
12. (2) 1/2"-20 x 1-3/4" Hex Cap Screws
13. (4) 1/2" SAE Flat Washers
14. (2) 1/2"-20 Nyloc Nuts
15. (2) 3/8"-16 Eye Bolts
16. (7) 3/8"-16 x 1" Button Head Cap Screws
17. (8) 3/8" SAE Flat Washers
18. (8) 3/8"-16 Nyloc Nuts
19. (2) 1/2" Rod Ends
20. (2) 1/2"-20 Thin Nuts
21. (2) 3/8"-16 x 1-1/2" Shoulder Bolts
22. (4) 1/4"-20 x 7/8" Button Head Cap Screws
23. (17) 1/4"-20 x 5/8" Button Head Cap Screws
24. (17) 1/4"-20 Nyloc Nuts
25. (4) 1/4"-20 Clip-Nuts

SPINNER OPTION

1. Threaded Spinner
2. Wheel Mounting Plate
3. Spinner Nut
4. (3) M12-1.75 x 30mm Socket Head Cap Screws
5. (3) M12-1.75 Lug Nuts
6. (2) 3/8"-16 Carriage Bolts

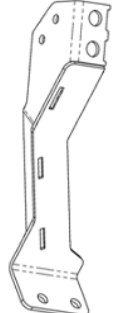


15" GAS STRUTS
QTY.2

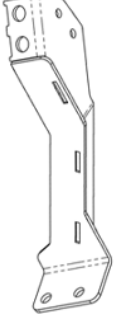
HEIM MOUNT
QTY.2

MAVR TC-03
QTY.1

STRUT MOUNT BRACE
PASS - QTY.1



STRUT MOUNT BRACE
DRV - QTY.1



HARDWARE PACK

SECTION 1

- HCS 1/2"-20 X 1-3/4" Z - QTY.2
- WASHER SAE 1/2" - QTY.4
- NYLOC NUT 1/2"-20 - QTY.2
- EYE BOLT 3/8" - 16 - QTY.2

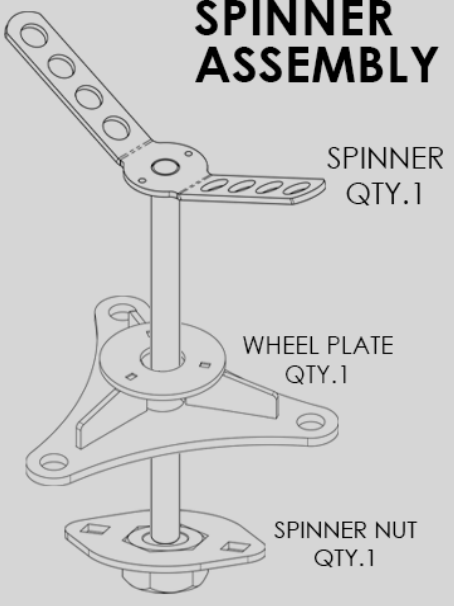
SECTION 2

- BHCS 3/8"-16 X 1" - QTY.7
- WASHER SAE 3/8" - QTY.8
- NYLOC NUT 3/8" - QTY.8

SECTION 3

- 1/2" ROD END - QTY.2
- THIN NUT 1/2"-20 - QTY.2
- SHOULDER BOLT 3/8"-16 X 1.5" - QTY.2
- BHCS 1/4"-20 X 5/8" - QTY.17
- BHCS 1/4"-20 X 7/8" - QTY.4
- NYLOC NUT 1/4"-20 - QTY.17
- CLIP NUT 1/4"-20 - QTY.4

SPINNER ASSEMBLY



HW PACK

- SHCS M12-1.75 X 30 Z - QTY.3
- LUG NUT M12-1.75 - QTY.3
- CARRIAGE BOLT 3/8"-16 X 1" - QTY. 2

INSTALLATION PROCEDURE

1. Begin by removing the (2) factory Torx T20 bolts at the very rear of the bed.



2. Remove the Taillight Bezels by removing the (2) Torx T30 bolts on the inside of the bezel on each side of the vehicle. Remove both bezels.



3. Remove the Rear Fascia by removing the Torx bolts using your T30 Torx bit. There are (2) bolts on the outside of the fascia and (2) just above the exhaust.



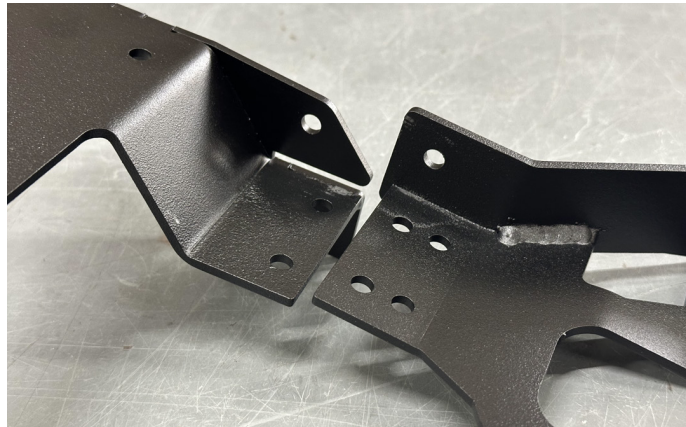
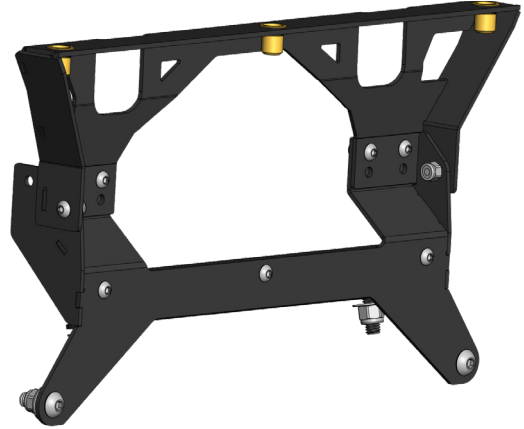
4. Unplug the Taillights as you remove the Rear Fascia. There are 2 plugs on the Drivers side and 1 plug on the Passenger side.



REAR BED BRACKET ASSEMBLY

2 SEAT INSTALLATION

4 SEAT INSTALLATION



Top and Bottom Bracket Interlock with each other as pictured

Notice the different assembly for the 2 seat and 4 seat Maverick R. They both use all of the same parts but installed differently. The L bracket with the 3 holes in it will be installed behind the lower bracket in both assemblies. Disregard the single bracket in the following photos as we created these installation instructions before we changed this bracket to accommodate the 4 seat change. The photos will be updated once we can get new photos.

Secure the bracket in the assembly needed using (9) of the supplied 1/4"-20 x 5/8" long Button Head Cap Screws and 1/4"-20 Nyloc Nuts. Then install the assembled bracket on the car and secure by following the steps on the next page.

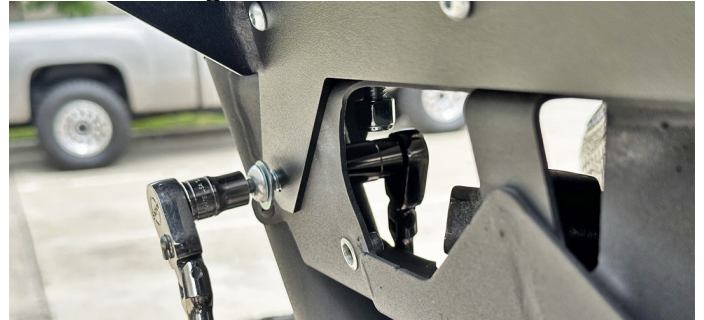
5. You will need to Trim the plastic slightly to install our Rear Bed Bracket. Hold the bracket up to the vehicle where it will be installed. Make a mark of what needs to be trimmed and start by trimming as little as possible and trim more if needed.



6. Install the assembled Bed Bracket in place and secure the bracket using the supplied (4) 3/8"-16 x 1" Button Head Cap Screws, 3/8" Flat Washers, and 3/8"-16 Nyloc Nuts.



7. Tighten hardware to secure Bed Bracket. It is easiest to tighten the bottom bolt with a 7/32" Hex Head bit and 9/16" socket and the bottom bolt is easier with a 7/32" Hex Head bit and a 9/16" ratcheting box wrench.



8. Clamp the Bed Bracket to the bed of the vehicle once the bottom hardware is all tightened down. Make sure to clamp the bracket on both sides to keep it straight. You will drill your holes in the plastic using this bracket as a guide in the next step.



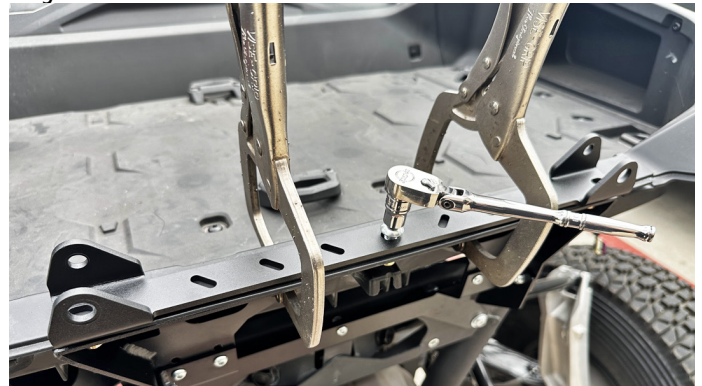
9. Drill a Pilot Hole with an 1/8" Drill Bit using the center hole in the Bed Bracket as a guide. Make sure to drill the hole as centered as possible. You may have to drill through a small part of the factory plastic under that rivnut.



10. Use your pilot hole as a guide and drill a final hole size of 7/16". BE CAREFUL not to drill into the rivnut. Drill slow and stop when you feel the drill bit penetrate through the plastic. The hole will be a bit oversized to make it easier for the install and will get covered by our bracket.



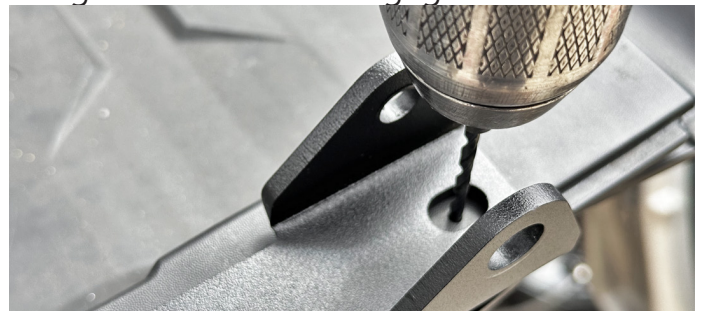
11. Set Mav R TC-03 Bracket in place with the bigger holes facing the rear of the Canam and secure it in the center using one of the 3/8"-16 x 1" Button Head Cap Screws and snug it down with your 7/32" Hex Key. Be sure to get the threads started before tightening to avoid cross threading, but leave it loose enough for adjustment.



12. Center the Mav R TC-03 Bracket using the outside holes as guides to ensure the spacing from the edge of the plastic is the same on both sides. It doesn't have to be exact, but it needs to be very close to ensure the pilot holes line up.



13. Drill the Side Pilot Holes using an 1/8" Drill Bit and using the bracket holes as a guide to keep the holes centered with the Rivnuts. Be careful to keep the drill bit straight to avoid hitting the Rivnut and damaging the threads.



14. Remove Mav R TC-03 Bracket once your outer pilot holes are drilled and drill your final hole size with a 7/16" Drill Bit. BE CAREFUL not to drill into the rivnut. Drill slow and stop when you feel the drill bit penetrate through the plastic. The hole will be a bit oversized to make it easier for the install and will get covered by our bracket.



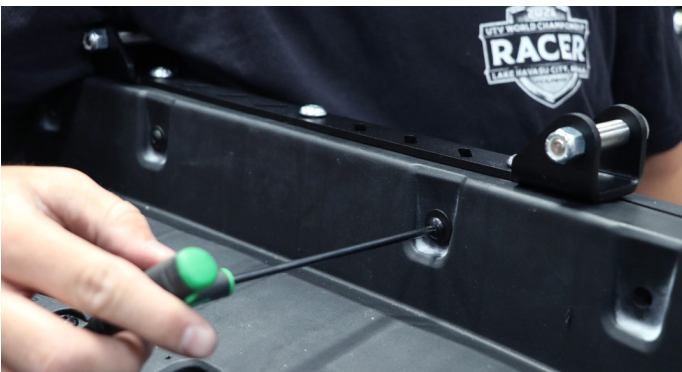
15. Secure Mav R TC-03 Bracket once all (3) 7/16" holes are drilled in the plastic. Use (3) of the supplied 3/8"-16 x 1" Button Head Cap Screws to secure the Bed Bracket 1 to the vehicle. Keep these a little loose as you will need to slide the fascia back in place between the brackets and these bolts will pinch it tight.



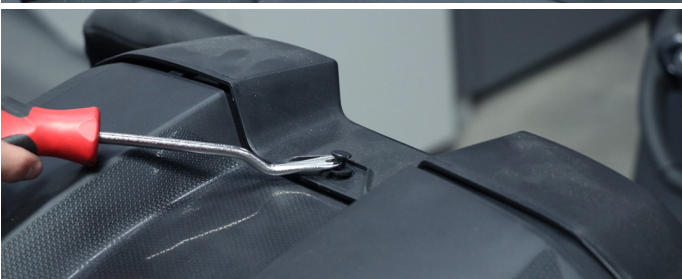
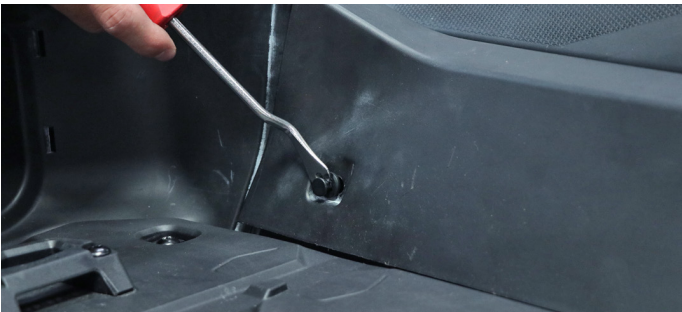
16. Install the supplied 3/8"-16 Shoulder Bolts into Mav R TC-03 making sure that you slide the bolt in through the larger hole first and install a 3/8"-16 Nyloc Nut on the threads. Use your 1/4" Hex Key and 7/16" Socket to fully tighten this hardware.



17. Reinstall the Rear Fascia using the factory Torx bolts that were removed.



18. Remove the (3) plastic clips that secure the intake cover.



19. Remove the (2) Torx T30 Bolts on each side of the intake cover and fully remove the intake cover from the car.



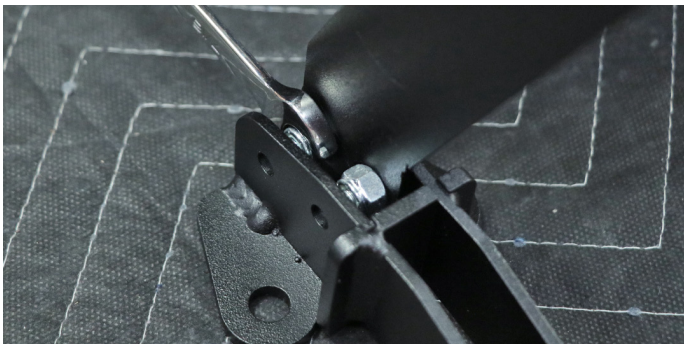
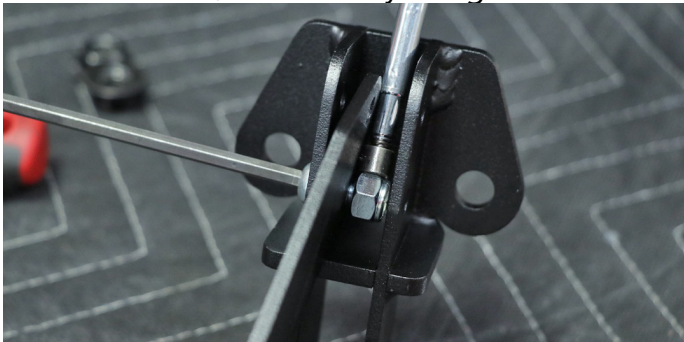
20. Remove the (4) Torx T30 Bolts behind the driver seat to gain access to the bolt behind that plastic panel. You will not need to fully remove this panel. Leave it in place for now.



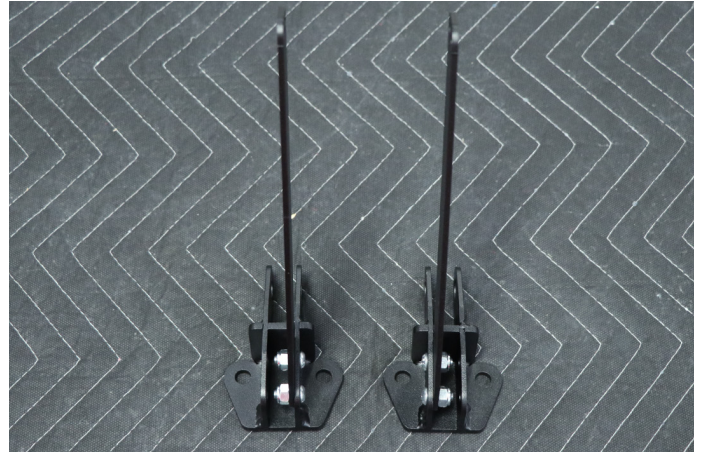
21. Remove the Torx T30 Bolt to the inside of the roll cage to move the plastic out of the way for the next steps.



22. Secure the Strut Bracket Flat Braces to the Heim Brackets braces using the supplied 1/4"-20 x 5/8" Button Head Cap Screws and 1/4"-20 Nyloc Nuts We found that using a small magnet makes it much easier to get the nut started on these bolts. MAKE SURE you assemble them on the correct side of the bracket and that you mirror the passenger side. SEE PHOTOS! Once you have them assembled, use a 7/16" box wrench and a 5/32" Hex Key to tighten them.



23. Make sure your brackets look as pictured below. They should mirror each other when assembled correctly. Install these brackets on the correct side of the car in the orientation shown below.



24. Insert a block or spacer between the factory tube and the plastic panel behind the drivers seat to gain access to the bolts under the plastic panel. Remove the factory nuts on the back side of the shock towers using a 15mm wrench on the bolt and nut. Install the Heim Brackets as pictured below and secure with the factory nuts that were removed previously.



25. Secure the Heim Brackets using your 15mm wrenches and fully tighten them down. Make sure your brackets are in the same orientation as shown below. The passenger side should mirror this photo.



26. Remove the (2) nuts that are located under the frame near the bottom of the shock using a 13mm Socket on both ends or a box wrench.



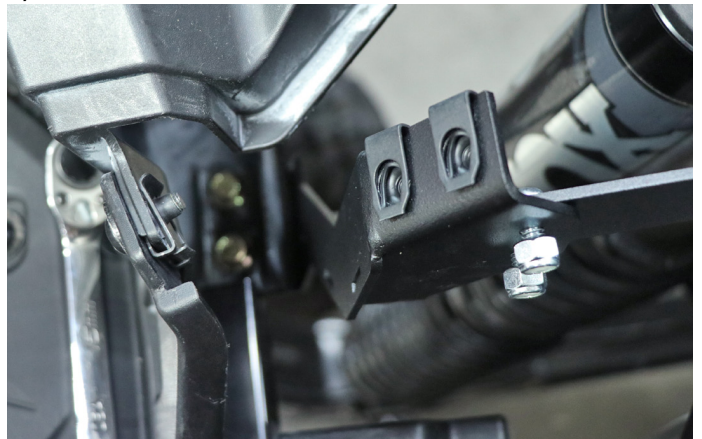
27. Install the Supplied 1/4"-20 Clip Nuts on the Strut Brackets as pictured below. MAKE SURE THE EXTRUDED SIDE IS INSIDE THE BRACKET!!!



28. Install the Strut Brackets to these bolts and reinstall the nyloc nuts using your 13mm socket.



29. Secure the Strut Bracket to the strut bracket flat brace using the supplied 1/4"-20 x 5/8" Button Head Cap Screws and 1/4"-20 nyloc nuts. Fully tighten with your 5/32" hex key and 7/16" socket.



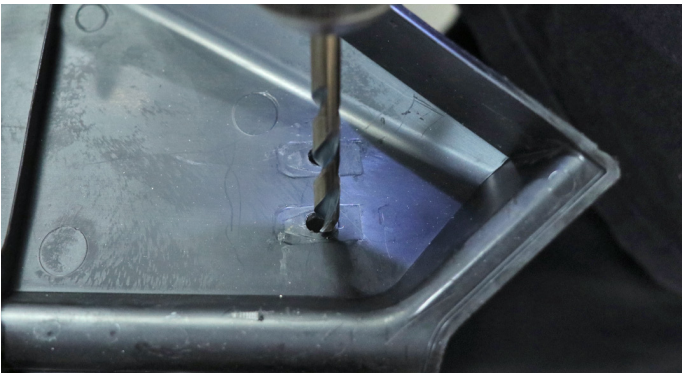
30. Reinstall the Intake Cover and secure it with the factory plastic clips that were removed. Leave the Torx bolts out for now.



31. Make marks on the bottom side of the Intake Cover using our Strut Bracket as a guide. Place your marker in the center of the (2) holes with the clip nuts installed on them on each side of the car.



32. Remove the Intake Cover once all (4) marks are made and drill your holes with a 9/32" drill bit.



33. Reinstall the Intake Cover once all (4) holes are drilled and fully secure the intake cover with the (3) plastic clips and (2) Torx bolts.



34. Install the Strut Mounts through the holes you drilled in the intake cover with the supplied 1/4"-20 x 7/8" Button Head Cap Screws and secure them to the Strut Brackets under the cover using your 5/32" Hex Key. Do not over tighten!



35. Install the supplied ball studs to the Strut Mounts with the supplied washer and flat nuts using a 12mm and a 14mm box wrench.



36. Install the supplied ball studs to the Tire Carrier Frame with the supplied washer and flat nuts using a 12mm and a 14mm box wrench.



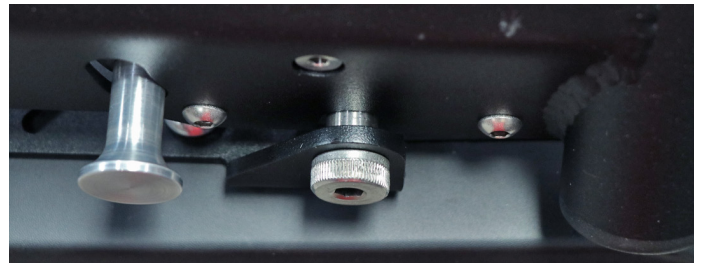
37. Install the supplied Heims into the ends of the frame. **USE ANTI-SEIZE** on the threads before installing and make sure the supplied flat nut is on the heim as well. Start with about 6 threads showing when the nut is against the frame.



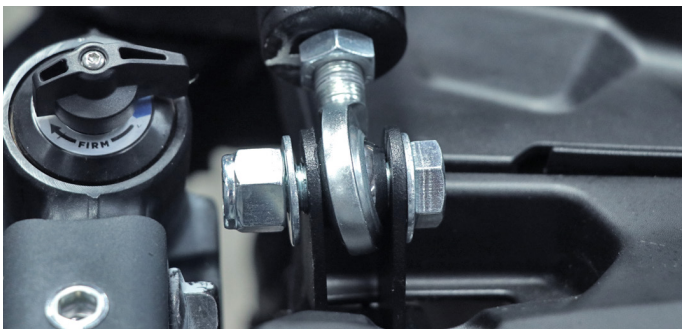
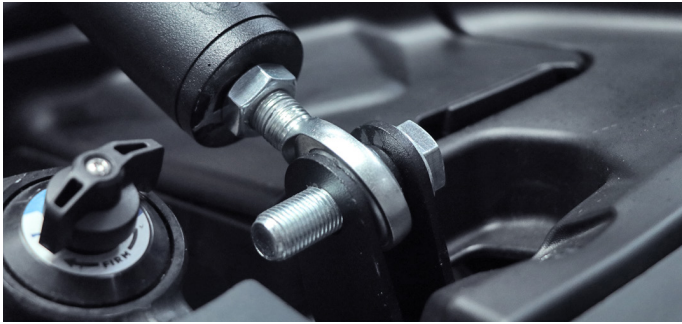
38. Install the Tire Carrier Frame on the car by first latching the rear to the Striker Bracket. You can then lower the front to rest the heims on the Heim Brackets. Line up the heims to sit inside of the Heim Brackets and adjust the heims as needed to line up the heims with the holes in the Heim Brackets.



39. Make sure the Frame is centered on the shoulder bolt in the striker assembly before you adjust the heims. Once it is centered on both sides, adjust the heims on both sides to align with the holes in the heim brackets.



40. Secure the Heims to the Heim Brackets using the supplied 1/2"-20 x 1-3/4" Hex Cap Screws, 1/2" SAE Flat Washers, and 1/2" Nyloc Nuts. Check that the carrier opens and closes nicely and fully tighten. Be sure to tighten the Thin Nut on the Heim with a 15mm Wrench.



41. Fully tighten the Striker Bracket using your 7/32" Hex Key once all adjustments have been made to the heims and the carrier is centered on the striker bolts. **DO NOT OVER TIGHTEN!**



42. Install the supplied 100lb Gas Struts with the BODY (bigger end of the strut) on the top. You simply press the fittings on the ends into the ball studs to secure the struts.



43. Close the Tire Carrier Frame completely to secure the latches (it takes some force without the spare tire on there).



NEXT STEPS FOR Y-STRAP ASSEMBLY

SEE NEXT PAGE IF INSTALLING WITH THE SPINNER OPTION

44. Install the 3/8"-16 Eye Bolts into the laser cut holes on the cross brace towards the end of the frame with the Heims. Secure the Eye Bolts using the supplied 3/8" Flat Washers and 3/8" Nyloc Nuts.



45. Install the supplied Y-Strap by first clipping the front 2 ends to the installed Eye Bolts. Set the strap out of the way to ensure the spare tire can be placed on the frame.

Set your spare tire on the frame and align it to where the front of the tire sets the front portion of the Y-Strap straight up with little or no angle. Wrap the back portion of the Y-Strap (with the Cagewrx logo) over the tire and hook it to the hoop on the back of the tire carrier frame. Make any adjustments needed to ensure each strap is centered and tight. The center ring on the Y-Strap should be centered over the center of the wheel.

NEXT STEPS FOR SPINNER ASSEMBLY

SEE PREVIOUS PAGE IF INSTALLING WITH THE Y-STRAP OPTION

44. Install the Spinner Nut using the supplied 3/8"-16 x 1" Carriage Bolts, 3/8" SAE Flat Washers, and 3/8" Nyloc Nuts. There are (3) different holes that you can use to adjust the tire forward or backward to your liking. Fully tighten the Spinner Nut in place using a 9/16" socket while holding the top down to make sure the bolt stays seated in the frame.



45. Remove Center Caps from wheels if your wheels have them as they will not fit when installed on our Tire Carrier. Keep in one of the storage compartments to use when you pull your spare off the carrier.



46. Assemble the Wheel Plate by installing the supplied (3) M12-1.75 x 30mm Socket Head Cap Screws with the supplied M12-1.75 Lug Nuts. Use your 10mm Hex Key and 19mm Box Wrench to fully tighten these bolts.



47. Place the Spare Tire on the Carrier and install our Wheel Plate and Spinner to line up the tire on our carrier. Once lined up, thread the spinner until the tire is tight on our carrier.



48. Lift up on the machined knobs in the rear to release the latches and the gas struts will lift the tire up and out of the way to allow access to the bed of your Maverick R.



49. Take a step back and cherish your beautiful new Spare Tire Carrier! Be sure to tag us in any photos of your new carrier installed to be featured on our social media pages.

