



MAVERICK R FRONT SEAT MOUNTS FOR SPARCO SEATS

IMPORTANT: Thank you for purchasing this Cagewrx product. Please read through this entire document before proceeding with installation. If you are not confident in your mechanical skills, please seek the help of a professional to perform the installation. Check your packages immediately upon arrival to ensure that everything listed is included, and to check for damage during shipping. If anything is missing or damaged, or if you need technical assistance with any aspect of this installation, call Cagewrx at (951) 223-9118 as soon as possible. This document last updated July 2024.

APPLICATIONS

These Installation Instructions apply to the following Cagewrx products:



MAVRSM-FRONT

Maverick R Seat Mount FRONT

PARTS LIST

Please check your packages immediately upon arrival to ensure that everything listed is included, and to check for damage during shipping. If anything is missing or damaged, call Cagewrx at (951) 223-9118 as soon as possible.

1. Seat Mount Base
2. Driver Side Seat Bracket
3. Passenger Side Seat Bracket
4. (4) 1/4"-20 Carriage Bolts
5. (4) 1/4"-20 Nyloc Nuts
6. (4) 1/4" SAE Washers
7. (4) M8x20 Socket Head Cap Screws
8. (4) M8x40 Socket Head Cap Screws
9. (8) 5/16" SAE Washers

TOOLS NEEDED

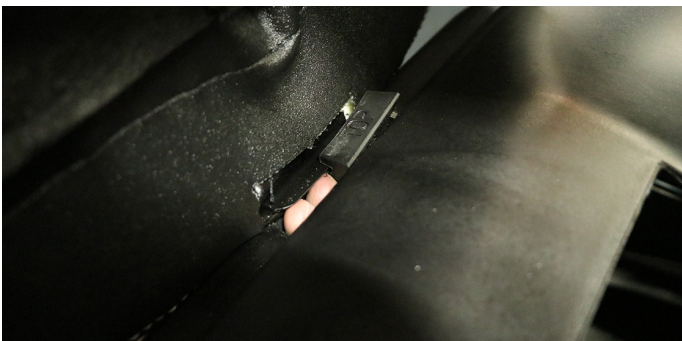
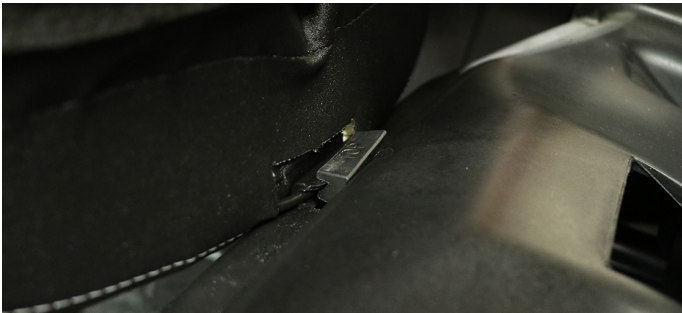
- Ratchet
- 7/16" Socket
- 6mm Hex Key
- 13mm Socket (if lowering factory base)
- 13mm Wrench (if lowering factory base)
- 16mm Socket (if replacing harnesses)
- 18mm Socket (if lowering factory base)
- 1/8" Drill Bit (if lowering factory base 2")
- 5/16" Drill Bit (if lowering factory base 2")

UPGRADE YOUR HARNESSSES!!

It is highly recommended to upgrade your harnesses along with your seats. Sparco sells a great camlock 5pt or 6pt harness that goes well with their seats.

INSTALLATION PROCEDURE

1. Remove the factory cushion by pulling up the rear of the cushion. You will notice the front is hooked under a bracket. You will need to slide the rubber stop out by pushing it sideways. It helps to reach from underneath and push up on it as you slide it off the other end.



2. Remove the 4 Factory Hex Bolts that hold the seat in place using a 13mm socket.



3. Guide the Factory Slider out of the slot in the factory seat by rotating the inner seat bracket or cut a slot as pictured and slide it out the slot as you remove the seat from the UTV.



4. Take note of the factory adjustment that can be made before you begin the installation process. You can remove the 1" spacer in the rear and there is a hole 1" lower in the front to drop the front down as well. If you want the factory seat base lower, now is the time to do so! Skip to page 5 if you do not wish to do this.



NEXT STEPS TO LOWER FACTORY BASE

SKIP TO PAGE 5 IF YOU DO NOT WANT TO LOWER YOUR FACTORY BASE

5. Take note of the height and angle of the factory seat base. It has room to come down 1" in the rear and 1" in the front using the factory mounting. You can also drill another hole 1" lower than the bottom mounting location in the front to drop the front down a total of 2".

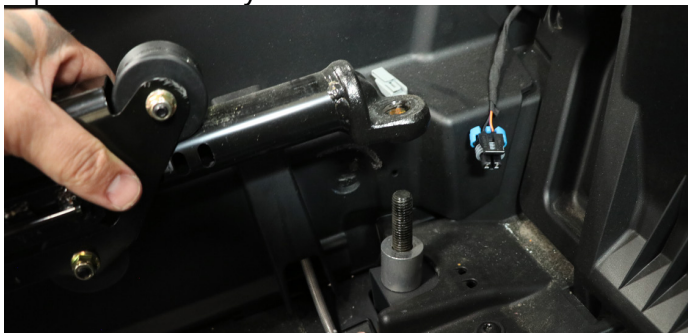
****NOTE: If you drill the hole to lower your factory base 2", the slider will not be able to slide all the way forward in the lowest front position. The slider will stop about 4" from the most forward location unless the factory tab is trimmed at the top.**



6. Remove the rear bolts holding the factory base in place using a 18mm socket.



7. Lift the factory seat base and remove the 1" spacer. Keep this spacer as it will be reinstalled on top of the factory seat base.



8. Replace lap belts on both sides if you plan to while you have this base off as it is much easier. Remove the factory bolts using a 16mm socket and install the Sparco lap belt with the bolts that are provided with the Sparco harnesses.



9. Place the 1" spacer on top of the factory seat base and tighten down the nyloc nut using your 18mm socket.



10. Remove the front bolts holding the factory base in place using a 13mm socket and 13mm wrench.



11. Notice the **Factory Seat Base** can now drop all the way down in the bracket. If you wish to lower the front 1", bolt the base into the lower factory holes in the bracket. If you wish to lower the front 2", you will need to measure down 1" from the lower hole and drill another hole. We will show you how to do this in the next steps.



12. **Measure down 1"** from the center of the bottom hole and make a mark at center in line with the 2 factory holes above.



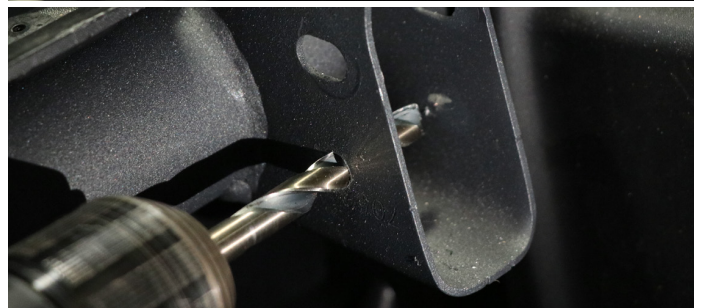
13. **Drill a Pilot Hole** using a 1/8" drill bit in the center of your mark. REMOVE FACTORY SEAT BASE BEFORE YOU DRILL YOUR HOLE! You only need to drill through the one side of the bracket for the pilot hole.



14. **Make a second mark** on the other side of the bracket to guide your drill bit when making the final hole. Try to line this up as best as possible at 1" down from the bottom factory hole just like the other side.



15. **Drill your final hole** using a 5/16" drill bit and using your pilot hole as a guide. Proceed to drill through the mark on the other side as well.



16. **Decide which mounting hole** will work best for your setup. Line up the factory seat base with the hole of choice and slide the bolt through the bracket and the seat base. Secure the bolt with the factory nyloc nut. Tighten fully.



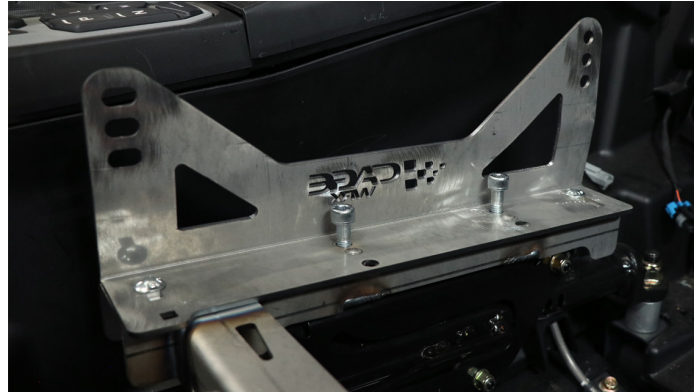
17. Rotate the factory slider bracket to allow the slider bar to pass through the slotted hole in our seat mount bracket. Slide our seat mount over the slider bar and rotate the bracket back to the factory position.



18. Slide both sides of the factory base to the very rear position to make alignment easier for the next steps. Place our seat mount in position and make sure the center holes in the side plates are aligned with the factory seat base holes. It is much easier when using a flashlight to check.



19. Secure the seat mount to the factory base using the provided M8 x 40mm Socket Head Cap Screws and 5/16" SAE Flat Washers. Tighten these bolts using a 6mm Hex Key. MAKE SURE BOLTS ARE LINED UP BEFORE TIGHTENING. DO NOT CROSS THREAD!



20. Install your Sparco Seat in the setting that best suits your driving needs. You can adjust the seat height and rake using the holes in our seat brackets. Once you have the seat in the location that you are happy with, be sure to fully tighten all of the SHCS with your 6mm Hex Key.



21. Route harnesses through seat slots and enjoy your newly mounted Sparco seats!

