



RZR XP 1000 SPARE TIRE CARRIER

IMPORTANT: Thank you for purchasing this CageWRX product. Please read through this entire document before proceeding with installation. If you are not confident in your mechanical skills, please seek the help of a professional to perform the installation. Check your packages immediately upon arrival to ensure that everything listed is included, and to check for damage during shipping. If anything is missing or damaged, or if you need technical assistance with any aspect of this installation, call CageWRX at (951) 223-9118 as soon as possible. This document last updated Sept 2019.

APPLICATIONS

These Installation Instructions apply to the following CageWRX products:



CWXP1KTIREHIGH
CWXP1KTIRESTD

RZR XP 1000 Spare Tire Carrier - High
RZR XP 1000 Spare Tire Carrier - Standard

PARTS LIST

Please check your packages immediately upon arrival to ensure that everything listed is included, and to check for damage during shipping. If anything is missing or damaged, call CageWRX at (951) 223-9118 as soon as possible.

- (1) Spare Tire Carrier - Frame
- (2) Gas Struts
- (1) Striker Bracket - Drivers Side
- (1) Striker Bracket - Passenger Side
- (1) Quick Thread Wheel Fastener
- (1) Wheel Centering Mount

- (2) 1/2" x 1/2"-20 Rod End w/ Jam Nut
- (2) 1/2"-13 x 2" Hex Cap Bolt
- (2) 1/2"-13 Nyloc Nut
- (2) Steel Bolt-On Clamps (1.75Ø Tube)
- (4) Weld-On Mounting Tabs (1.75Ø Tube)
- (2) 3/4"Ø x 1" Steel Spacer
- (2) M6-1.0 x 45mm Hex Cap Screw
- (4) M6-1.0 x 35mm Socket Head Cap Screw
- (2) 6mm Washer
- (4) 5/16"-18 Nyloc Nut



TOOLS NEEDED

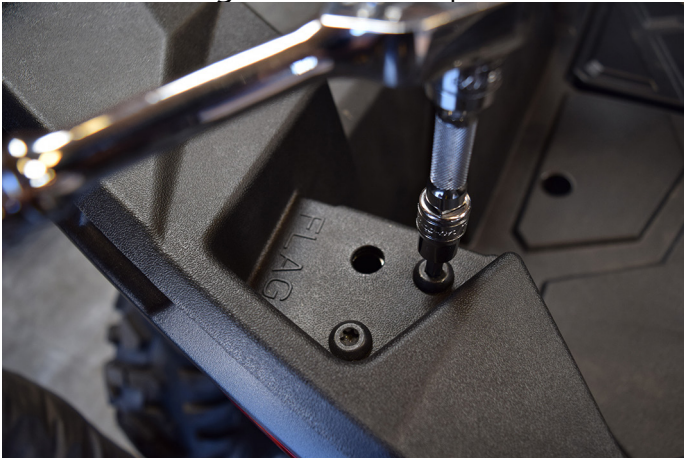
- 3/8" Ratchet Wrench
- (2) 19mm or 3/4" Box Wrench
- (2) 13mm or 1/2" Box Wrench
- 10mm Socket
- 3/16" Allen or Socket Bit
- Torx T40 Allen or Socket Bit

INSTALLATION PROCEDURE

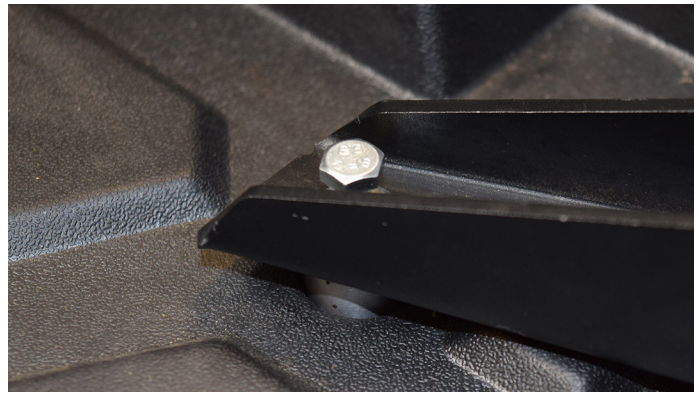
1. Use a Torx T40 Allen or Socket Bit to remove the 2 rear outer bed bolts. You may discard these bolts as they will no longer be needed.



2. Use a Torx T40 Allen or Socket Bit to remove the 4 Torx Bolts surrounding the **FLAG** holes above the taillights. Keep these bolts as they will be reused during the installation process.



3. Install the supplied Striker Brackets using the supplied 3/4"Ø x 1" Steel Spacers, followed by the Striker Brackets, followed by the supplied 6mm Washers, followed by the supplied M6-1.0 x 45mm Hex Cap Screws.



4. Re-Install the factory Torx bolts into the holes on the top of the Striker Brackets.



6. Install the supplied 1/2" x 1/2"-20 Rod Ends with Jam Nuts into the threaded ends of the Tire Carrier Main Frame. You will adjust the Heims to the correct length in a later step. For now, thread them in to where the Jam Nut is almost all the way threaded on.



7. Set the Tire Carrier Frame in place by pressing the latches onto the Striker Brackets and allow the Heims to rest on the front of the bed. Slide the Tire Carrier Frame left or right until the latches are evenly spaced on the Striker Brackets.



8. Lift up on the front of the Tire Carrier Frame to determine the proper locations for the Steel Bolt-On Clamps (shown) or the Weld-On Tabs. Hold the Steel Bolt-On Clamps in place so that the Heim aligns perfectly in the middle of the Steel Bolt-On Clamps.



9. Use the supplied M6-1.0 x 35mm Socket Head Cap Screws to install the Steel Bolt-On Clamps.



10. Adjust the Heims in or out to align the hole in the Heim with the holes in the Steel Bolt-On Clamps. Be sure to tighten down the Jam Nut firmly once the proper position is acquired.

11. Secure the Heims to the Steel Bolt-On Clamps using the supplied 1/2"-13 x 2" Hex Cap Bolts and 1/2"-13 Nyloc Nuts.



12. Install the Gas Struts by placing the threaded ends through the holes at the bottom of the Striker Brackets and in the bracket in the center of the Tire Carrier Frame. MAKE SURE the thicker body of the strut is on the top!!! Use the supplied 5/16"-18 Nyloc Nuts to secure them in place.



13. Place your spare tire on the Tire Carrier and set the Wheel Centering Mount in place. Place the Quick Thread Wheel Fastener through the Wheel Centering Mount and begin to thread it into the Tire Carrier Frame. Making sure the Wheel Centering Mount stays centered in the lug nut holes in the wheel, continue to thread the Quick Thread Wheel Fastener until it is Secure.



14. Pull up on both latches to be sure that the Tire Carrier is functioning properly and everything is aligned correctly. If any adjustments are needed, be sure to remove the spare tire before making any adjustments.