



RZR XP 1000/XP TURBO/TURBO S ALUMINUM FULL DOORS

IMPORTANT: Thank you for purchasing this CageWRX product. Please read through this entire document before proceeding with installation. If you are not confident in your mechanical skills, please seek the help of a professional to perform the installation. Check your packages immediately upon arrival to ensure that everything listed is included, and to check for damage during shipping. If anything is missing or damaged, or if you need technical assistance with any aspect of this installation, call CageWRX at (951) 223-9118 as soon as possible. This document last updated Dec 2021.

APPLICATIONS

These Installation Instructions apply to the following CageWRX products:



CWRZR4DOORS Aluminum Full Doors for 4 Seat RZR

TOOLS NEEDED

- 3/8" Ratchet Wrench
- 5/8" Socket and Box Wrench
- 9/16" Socket
- 15mm Socket
- 15mm Box Wrench
- 7/16" Box Wrench
- 11/32" Box Wrench_
- 7/32" Hex Wrench
- 5/32" Hex Wrench
- 3/32" Hex Wrench_
- Torx T40
- Torx T30
- Torx T25
- Standard Slotted Screwdriver
- Rubber Mallet

PARTS LIST

1. Driver Side Front Door Panel
2. Passenger Side Front Door Panel
3. Driver Side Rear Door Panel
4. Passenger Side Rear Door Panel
5. Driver Side Chassis Mount
6. Passenger Side Chassis Mount
7. Driver Side Front Striker Bracket
8. Driver Side Rear Striker Bracket
9. Passenger Side Front Striker Bracket
10. Passenger Side Rear Striker Bracket
11. (2) Chassis Mount Bracket
12. (2) Hinge Mount
13. (4) Door Hinge Bracket
14. (5) Striker Bracket Spacer Plates
15. (4) 7/16"-14 x 2" Hex Bolts
16. (4) 7/16"-14 Locknuts
17. (8) 7/16" SAE Flat Washers
18. (12) 3/8"-16 x 1" Button Head Cap Screws
19. (12) 3/8"-16 Clip Nuts
20. (10) 3/8"-16 x 1" Square-Neck Carriage Bolts
21. (10) 3/8"-16 Nyloc Nuts
22. (10) 3/8" SAE Flat Washers
24. (6) M6, 20mm Long, Button Head Cap Screws
25. (4) M6, 30mm Long, Button Head Cap Screws
26. (24) M6 SAE Flat Washers
27. (6) M6 Nyloc Nuts
27. (8) 1/4"-20 Acorn Cap Nuts
28. (8) 1/4"-20 x 1/2" Truss Head Slotted Screws
29. (2) 60" Trim Lok Rubber Seal - FRONT DOORS
30. (2) 53" Trim Lok Rubber Seal - REAR DOORS

BEFORE YOU BEGIN

Remove your factory doors along with the striker plates, latches, and the small rear panel assembly along with the tube that it attaches to. You will also need to remove the B-Pillar plastic panel. You will reuse your factory striker plates and door latches along with the hardware for them. During the install, leave all hardware loose enough to allow the doors and brackets to adjust. Once everything is adjusted correctly, you will then begin to tighten everything down.

INSTALLATION PROCEDURE

1. This is what your Polaris RZR should look like when you are ready to begin.



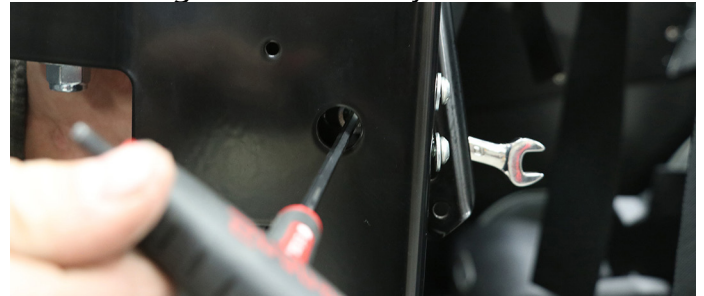
2. Install the Chassis Mount using the (2) supplied 7/16"-14 x 2" Hex Bolts, (2) 7/16" Flat Washers, and (2) 7/16"-14 Locknuts. Do not tighten these bolts yet.



3. Install the Chassis Mount Bracket by hand to the back side of the Main Door Brackets using 2 of the supplied 20mm long M6 Button Head Cap Screws, #12 SAE Washers, and M6 Nyloc Nuts.



4. Insert the 3rd M6 BHCS and SAE washer through the hole in the side of the Main Door Bracket using a 4mm Hex Key.



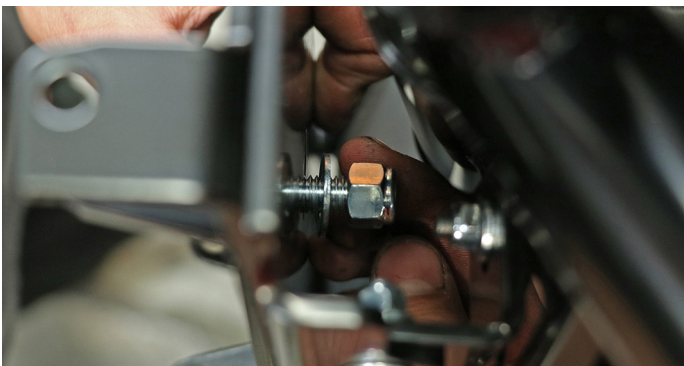
5. Tighten the Chassis Mount Bracket using the 4mm Hex Key and a 10mm box wrench on the M6 Nylock nut. Try to get this bracket as close to parallel with the car as possible for now and tighten all 3 bolts.



6. Snug down the Main Door Bracket using a 5/8" socket and box wrench to keep it in place, but keep it loose enough to allow it to adjust if needed. Snug the top and bottom bolt.



7. Install the Hinge Mount using 5 of the supplied 3/8"-16 Carriage Bolts, 3/8 SAE Flat Washers, and 3/8"-16 Nyloc Nuts. Do not tighten this bracket down yet.



8. This is what your assembly should look like so far.



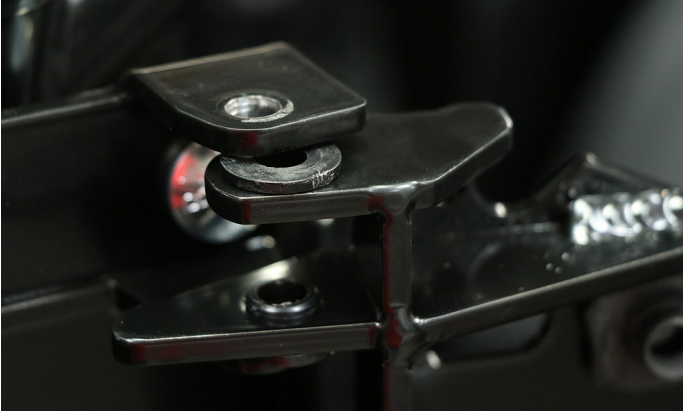
9. Install the supplied 3/4" U Nuts onto one of the supplied Door Hinges. MAKE SURE THE ORIENTATION IS CORRECT. The extruded side of the U Nut should be on the inside of the tab, not on the side with the flat surface. Using a mallet or ball peen hammer makes this process easier.



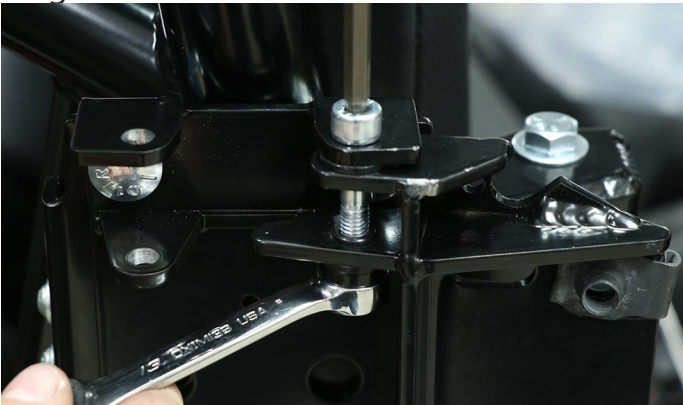
10. Insert the factory Door Bushings as shown below. Insert them in the same orientation on both ends of the bracket.



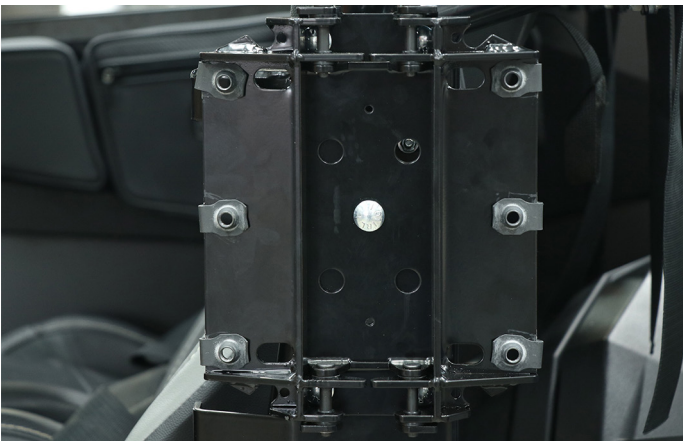
11. Install the Door Hinge by lining up the bushings between the Door Hinge Mount. The flat surface of the Door Hinge will face the inside of the car. The fit is very snug so you may need to use a mallet to tap these into place.



12. Secure the Door Hinge to the Door Hinge Mount using the supplied M8 SHCS and M8 Nyloc Nuts. Insert all of these bolts from the top with the nuts on the bottom. Leave these bolts snug for now.



13. This is what your assembly for the Driver Side of the RZR should look like so far.



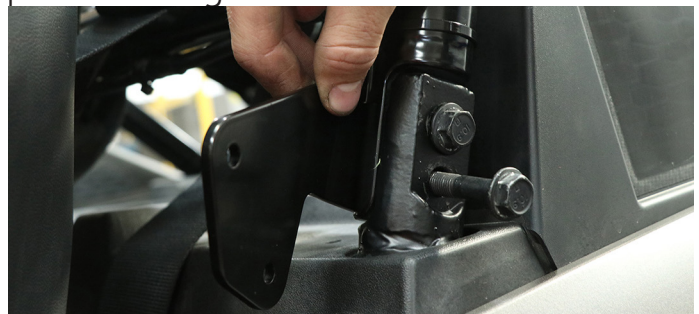
14. Install the supplied Driver Front Striker Bracket using the supplied 30mm long M6 BHCS with a M6 SAE Flat Washer. Leave these snug.



15. Install the factory Driver Front Striker Plate with the supplied 1/4"-20 Slotted Screws and 1/4"-20 Acorn Cap Nuts. Leave these snug.



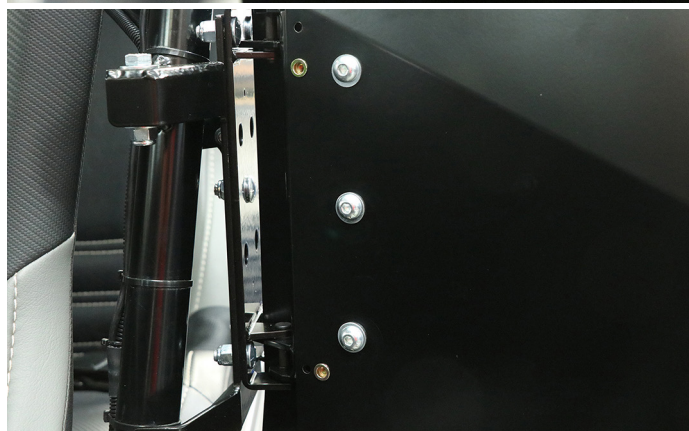
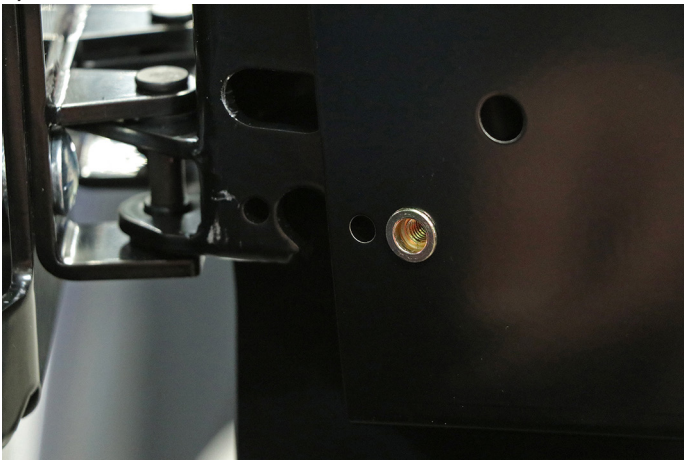
16. Install the supplied Driver Back Striker Bracket using the factory bolts and nuts that were removed. Hold it centered as best as possible and tighten down.



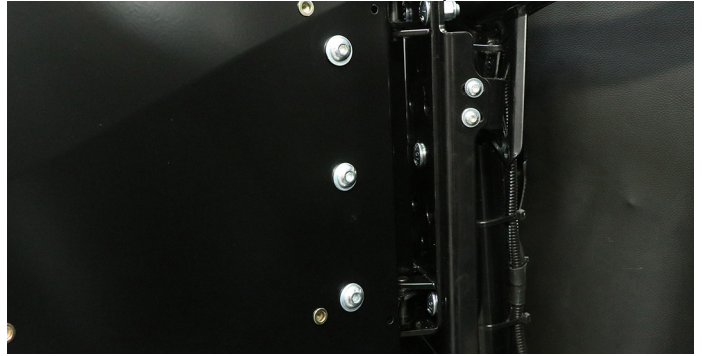
17. Install the factory Driver Rear Striker Plate with the supplied 1/4"-20 Slotted Screws and 1/4"-20 Acorn Cap Nuts. Leave these snug.



18. Slide the Driver Front Door Panel onto the Driver Front Door Hinge. You will need to slide the door panel onto the hinge starting with the bottom and sliding it up into the slot in the Door Hinge as shown. You can then slide the top into place and insert the 3 supplied 3/8"-16 BHCS with 3/8" SAE Flat Washers.



19. Install the Driver Rear Door Panel using the same method. The rear door panels slide in a little easier than the front door panels.



20. Install the factory Driver Front Door Latch using the factory hardware and the supplied M6 SAE Flat Washers. Make sure to center the latch in the cutout on the door panel and tighten.



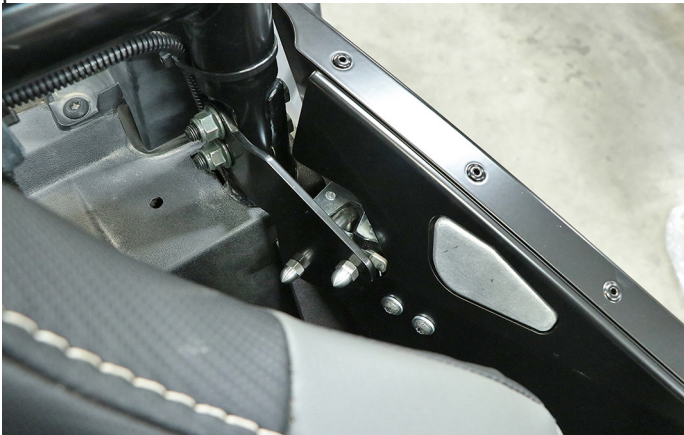
21. Carefully close the Driver Front Door Panel and latch it onto the striker bracket to hold it in place. Now we will start with the adjustment of the door panels to get everything looking good. Now is a good time to grab another beverage.



22. Line up the top front of the Driver Front Door Panel to the body panel and make sure the gap is tight all the way down to the bottom. Once you get it close, tighten down the middle 3/8"-16 door panel bolt.



23. Carefully close the Driver Rear Door Panel and latch it onto the striker bracket to hold it in place.



24. Adjust the Driver Rear Door Panel until the top aligns with the top of the Driver Front Door Panel and lines up nicely with the body of the RZR in the rear.



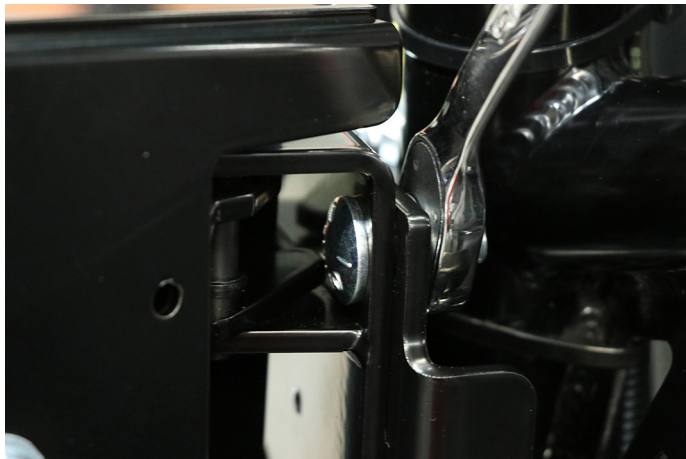
25. Tighten the middle 3/8"-16 Door Panel Bolt. Step back and take a look to make sure everything is lined up nicely. Make any adjustments as needed to the rotation of the door panels and then proceed to tighten down the rest of the door panel bolts.



26. Tighten the Chassis Mount completely once the main adjustments are done.



27. Tighten the Door Hinge Mount carriage bolts completely once the main adjustments are done.



28. If Installing Door Bags, secure them to the inner door panel using the 5 supplied M6 Flat Hex Screws.



29. Make any Final Adjustments to get your new doors to line up nicely. You will need to loosen the part that you need to adjust and remember to tighten it back up. Every RZR lines up differently so there is a bit of adjustment and you may need to take a little time to get everything to line up right. Take your time!



30. All Finished! Now get that thing out to the desert and take some photos so that we can see them in action. Be sure to use #CAGEWRX on social media for a chance to have your RZR featured on our page! Thank you for your business. We sincerely appreciate you!

